



# City of Wildomar Redistricting 2021

1/12/2022

Todd Tatum  
National Demographics Corporation

# Redistricting Process

---

| Step   | Description   |
|--|---|
| <b>Two Initial Hearings</b><br>September 8 & November 10 | Held prior to release of draft maps.<br>Education and to solicit input on the communities in the Districts. |
| <b>Census Data Release</b><br>Mid/Late August            | Census Bureau releases official 2020 Census population data.  |
| <b>California Data Release</b><br>Early October 2021     | California Statewide Database releases California's official 'prisoner-adjusted' 2020 redistricting data.   |
| <b>Two Draft Map Hearings</b><br>January 12 & ????       | Two Public Hearings to discuss and revise the draft maps and to discuss the election sequence.              |
| <b>Map Adoption</b><br>By April 17, 2022                 | Final map must be posted at least 7 days prior to adoption.<br>Map adopted via ordinance.*                  |

# Redistricting Rules and Goals

## 1. Federal Laws

Equal Population  
Federal Voting Rights Act  
No Racial Gerrymandering



## 2. California Criteria for Cities (rank ordered)

1. Geographically contiguous
2. Undivided neighborhoods and “communities of interest”  
(Socio-economic geographic areas that should be kept together)
3. Easily identifiable boundaries
4. Compact  
(Do not bypass one group of people to get to a more distant group of people)

### Prohibited:

“Shall not favor or discriminate against a political party.”

## 3. Other Traditional Redistricting Principles

Minimize voters shifted to different election years  
Respect voters’ choices / continuity in office  
Future population growth  
Preserving the core of existing districts

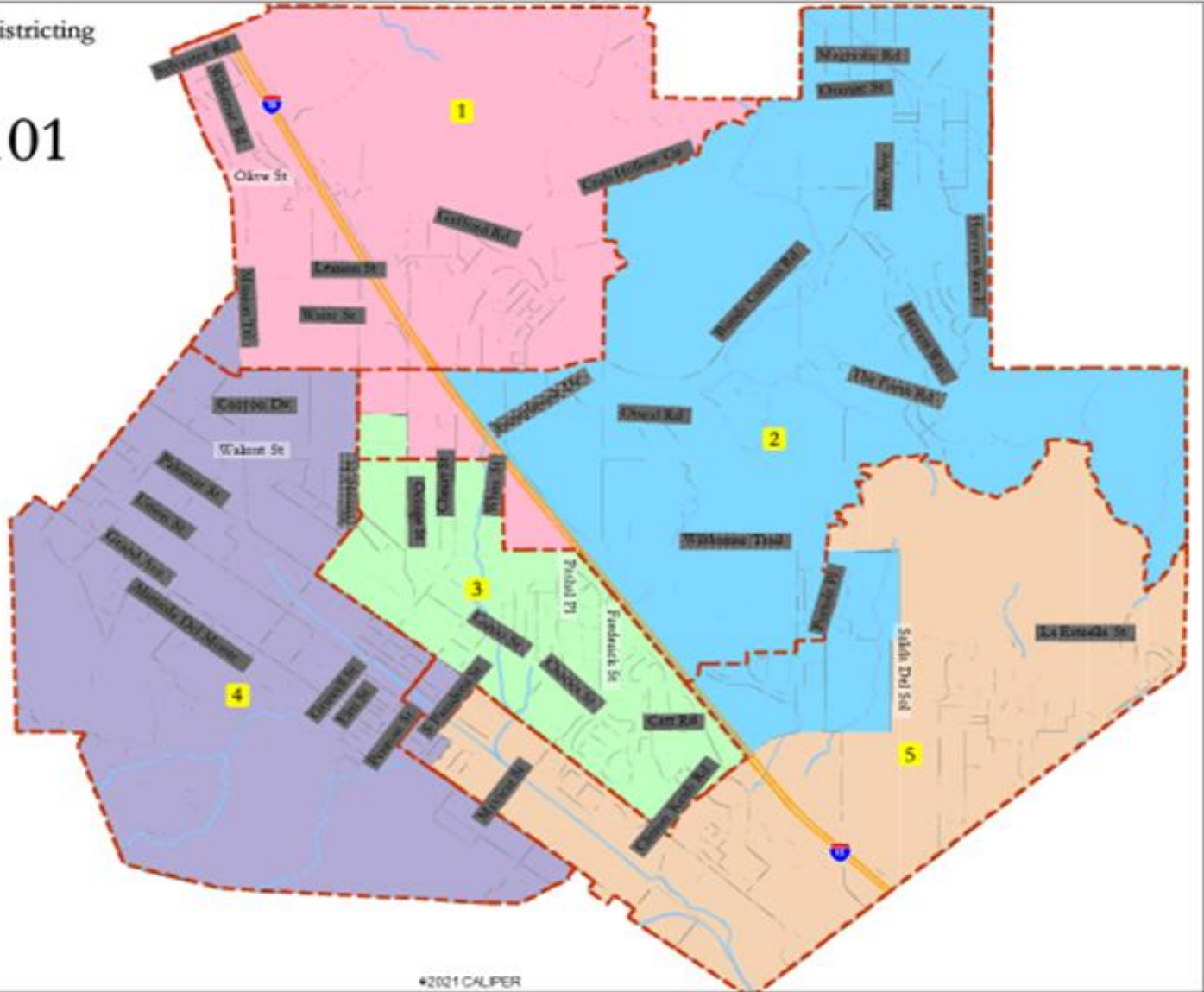
# Initial Draft Maps

- Three initial draft maps have been developed by NDC and one draft map submitted from the public.
- All of the maps created by NDC have a deviation under the required 10%. The public map is also below 10%.
- NDC Map 101 has a deviation of 5.22%
- NDC Map 102 has a deviation of 5.66%
- NDC Map 103 has a deviation of 8.74%
- The Public Map 101 has a deviation of 0.88%
- Existing Districts deviation is 35.89%

# NDC 101

Map layers

- Districts
- Census Block
- River
- Streets
- Currents

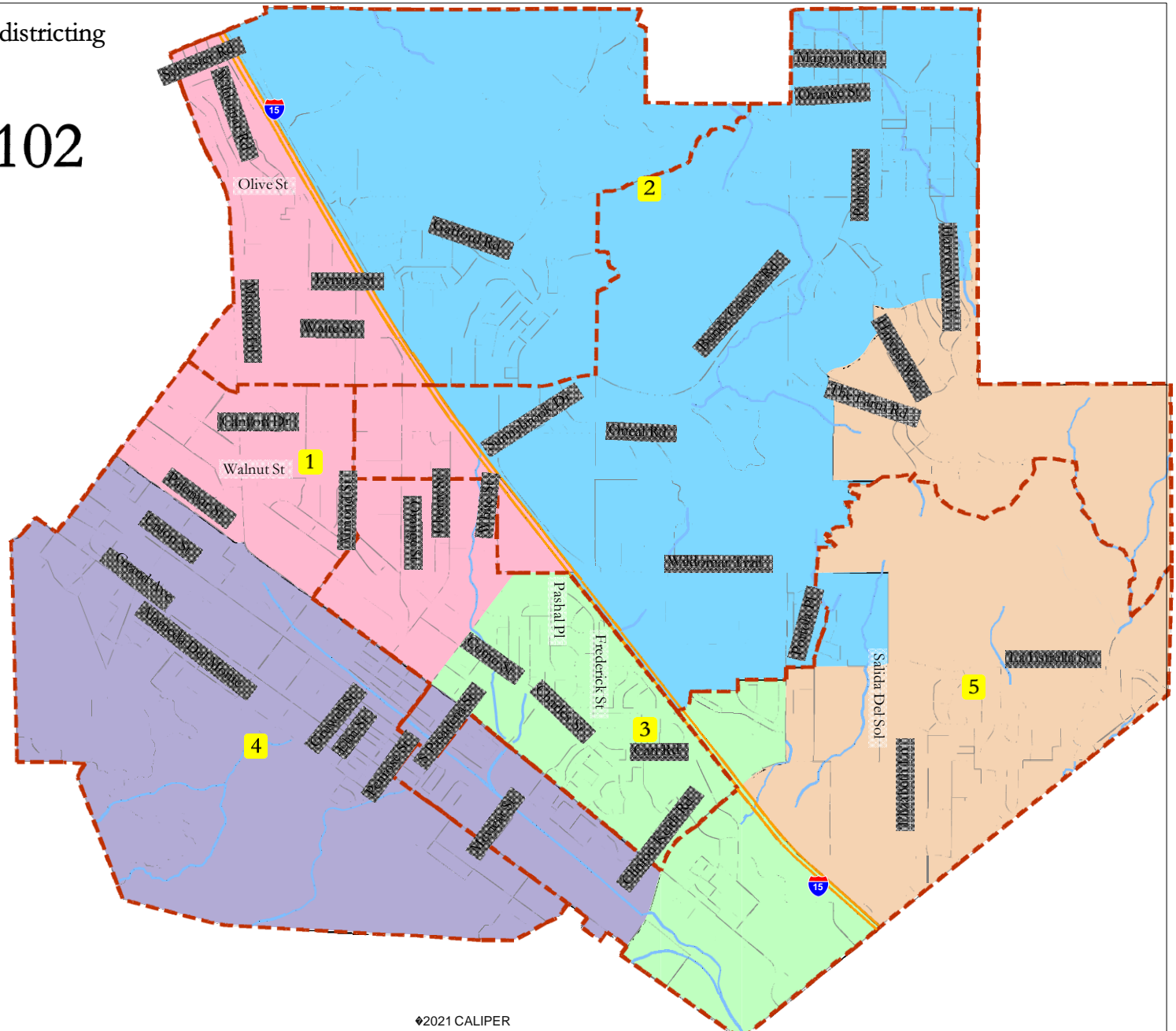


# NDC Map 101 Demographics

| NDC Map 101                   |                      |       |        |       |       |        |        |
|-------------------------------|----------------------|-------|--------|-------|-------|--------|--------|
| District                      |                      | 1     | 2      | 3     | 4     | 5      | Total  |
|                               | Total Pop            | 7,581 | 7,368  | 7,408 | 7,446 | 7,195  | 36,998 |
|                               | Deviation from ideal | 181   | -32    | 8     | 46    | -205   | 386    |
|                               | % Deviation          | 2.45% | -0.43% | 0.11% | 0.62% | -2.77% | 5.22%  |
| Total Pop                     | % Hisp               | 56.4% | 34%    | 35%   | 46%   | 31%    | 41%    |
|                               | % NH White           | 35%   | 50%    | 46%   | 42%   | 46%    | 44%    |
|                               | % NH Black           | 3%    | 4%     | 5%    | 2%    | 8%     | 4%     |
|                               | % Asian-American     | 3%    | 7%     | 9%    | 5%    | 10%    | 7%     |
| Citizen Voting Age Pop        | Total                | 4,490 | 4,562  | 4,959 | 4,873 | 4,752  | 23,637 |
|                               | % Hisp               | 42%   | 28%    | 31%   | 35%   | 24%    | 32%    |
|                               | % NH White           | 50%   | 63%    | 54%   | 58%   | 51%    | 55%    |
|                               | % NH Black           | 4%    | 2%     | 7%    | 1%    | 10%    | 5%     |
|                               | % Asian/Pac.Isl.     | 3%    | 5%     | 7%    | 4%    | 12%    | 6%     |
| Voter Registration (Nov 2020) | Total                | 3,637 | 4,527  | 4,464 | 4,118 | 4,213  | 20,959 |
|                               | % Latino est.        | 41%   | 25%    | 28%   | 33%   | 25%    | 30%    |
|                               | % Spanish-Surnamed   | 37%   | 24%    | 26%   | 31%   | 23%    | 28%    |
|                               | % Asian-Surnamed     | 1%    | 2%     | 2%    | 1%    | 2%     | 2%     |
|                               | % Filipino-Surnamed  | 1%    | 2%     | 2%    | 1%    | 2%     | 2%     |
|                               | % NH White est.      | 55%   | 70%    | 61%   | 64%   | 61%    | 63%    |
| Voter Turnout (Nov 2020)      | % NH Black           | 3%    | 2%     | 8%    | 1%    | 11%    | 5%     |
|                               | Total                | 2,747 | 3,630  | 3,678 | 3,273 | 3,450  | 16,778 |
|                               | % Latino est.        | 38%   | 23%    | 27%   | 30%   | 24%    | 28%    |
|                               | % Spanish-Surnamed   | 35%   | 22%    | 25%   | 28%   | 22%    | 26%    |
|                               | % Asian-Surnamed     | 1%    | 2%     | 2%    | 1%    | 2%     | 2%     |
|                               | % Filipino-Surnamed  | 1%    | 2%     | 2%    | 1%    | 2%     | 2%     |
| % NH White est.               | 57%                  | 72%   | 63%    | 67%   | 62%   | 64%    |        |
|                               | % NH Black           | 3%    | 2%     | 8%    | 1%    | 11%    | 5%     |

# NDC 102

- Map layers
- NDC 102
  - Census Block
  - River
  - Streets
  - Currents



# NDC Map 102 Demographics

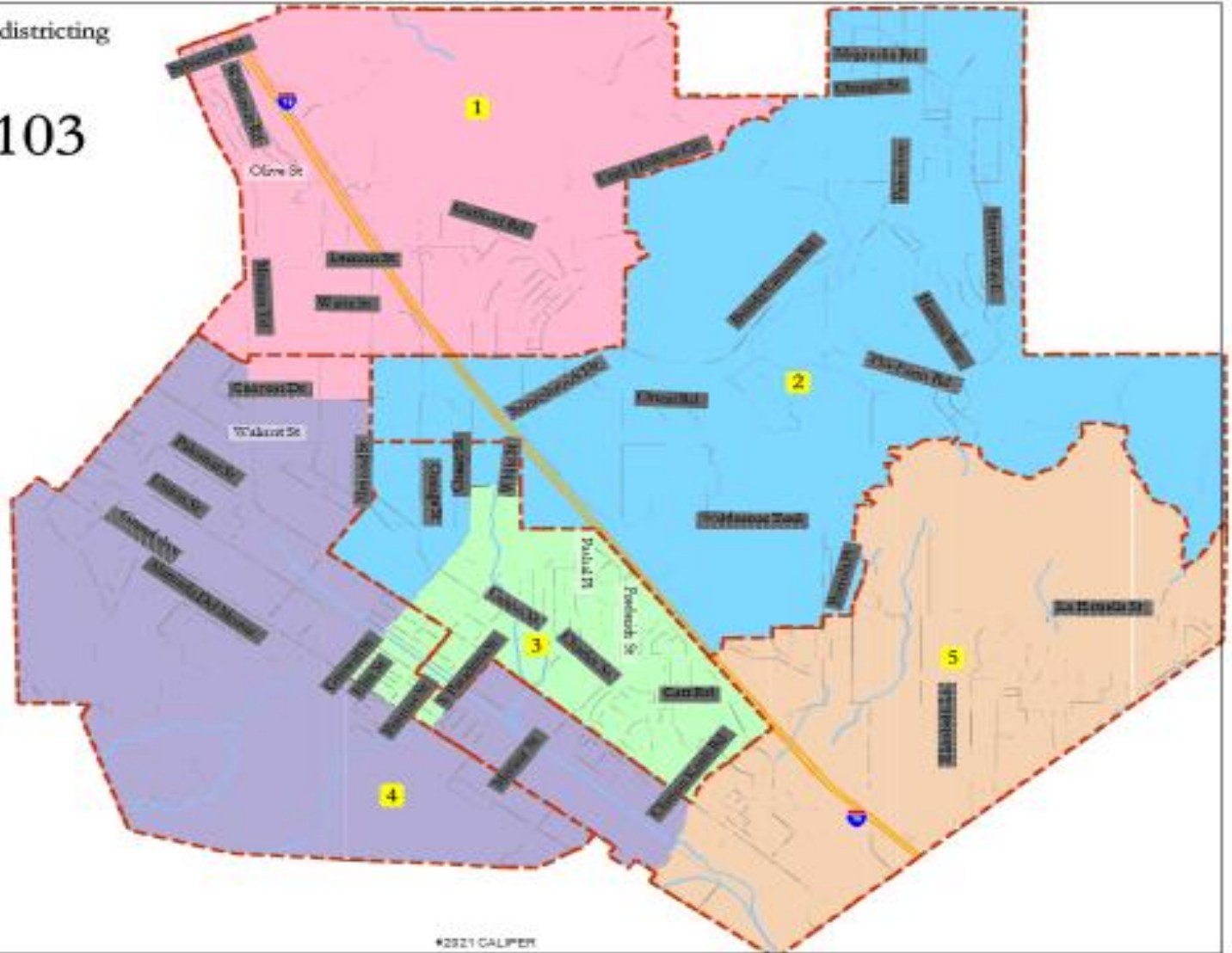
| NDC Map 102                   |                      |        |       |        |        |       |        |
|-------------------------------|----------------------|--------|-------|--------|--------|-------|--------|
| District                      |                      | 1      | 2     | 3      | 4      | 5     | Total  |
|                               | Total Pop            | 7,328  | 7,588 | 7,239  | 7,212  | 7,631 | 36,998 |
|                               | Deviation from ideal | -72    | 188   | -161   | -188   | 231   | 419    |
|                               | % Deviation          | -0.97% | 2.54% | -2.18% | -2.54% | 3.12% | 5.66%  |
| Total Pop                     | % Hisp               | 54.7%  | 42%   | 34%    | 43%    | 31%   | 41%    |
|                               | % NH White           | 36%    | 45%   | 44%    | 45%    | 48%   | 44%    |
|                               | % NH Black           | 2%     | 3%    | 6%     | 3%     | 7%    | 4%     |
|                               | % Asian-American     | 4%     | 5%    | 10%    | 5%     | 9%    | 7%     |
|                               |                      |        |       |        |        |       |        |
| Citizen Voting Age Pop        | Total                | 4,467  | 4,606 | 4,841  | 4,442  | 5,280 | 23,637 |
|                               | % Hisp               | 39%    | 33%   | 30%    | 35%    | 24%   | 32%    |
|                               | % NH White           | 51%    | 57%   | 52%    | 60%    | 55%   | 55%    |
|                               | % NH Black           | 3%     | 3%    | 9%     | 2%     | 8%    | 5%     |
|                               | % Asian/Pac.Isl.     | 4%     | 5%    | 8%     | 2%     | 11%   | 6%     |
| Voter Registration (Nov 2020) | Total                | 3,604  | 4,447 | 4,155  | 4,092  | 4,661 | 20,959 |
|                               | % Latino est.        | 38%    | 31%   | 28%    | 32%    | 24%   | 30%    |
|                               | % Spanish-Surnamed   | 35%    | 28%   | 26%    | 29%    | 22%   | 28%    |
|                               | % Asian-Surnamed     | 1%     | 2%    | 2%     | 1%     | 2%    | 2%     |
|                               | % Filipino-Surnamed  | 1%     | 1%    | 2%     | 1%     | 2%    | 2%     |
|                               | % NH White est.      | 59%    | 64%   | 60%    | 66%    | 64%   | 63%    |
|                               | % NH Black           | 3%     | 2%    | 9%     | 1%     | 9%    | 5%     |
| Voter Turnout (Nov 2020)      | Total                | 2,786  | 3,451 | 3,442  | 3,311  | 3,788 | 16,778 |
|                               | % Latino est.        | 35%    | 29%   | 27%    | 29%    | 23%   | 28%    |
|                               | % Spanish-Surnamed   | 32%    | 27%   | 25%    | 27%    | 21%   | 26%    |
|                               | % Asian-Surnamed     | 1%     | 2%    | 2%     | 1%     | 2%    | 2%     |
|                               | % Filipino-Surnamed  | 1%     | 1%    | 2%     | 1%     | 2%    | 2%     |
|                               | % NH White est.      | 61%    | 66%   | 61%    | 68%    | 65%   | 64%    |
|                               | % NH Black           | 3%     | 2%    | 9%     | 1%     | 9%    | 5%     |



Wildomar 2021 Redistricting

# NDC 103

- Map layers
- NDC 103
  - Census Block
  - River
  - Streets
  - Counties



#2021 CALPER

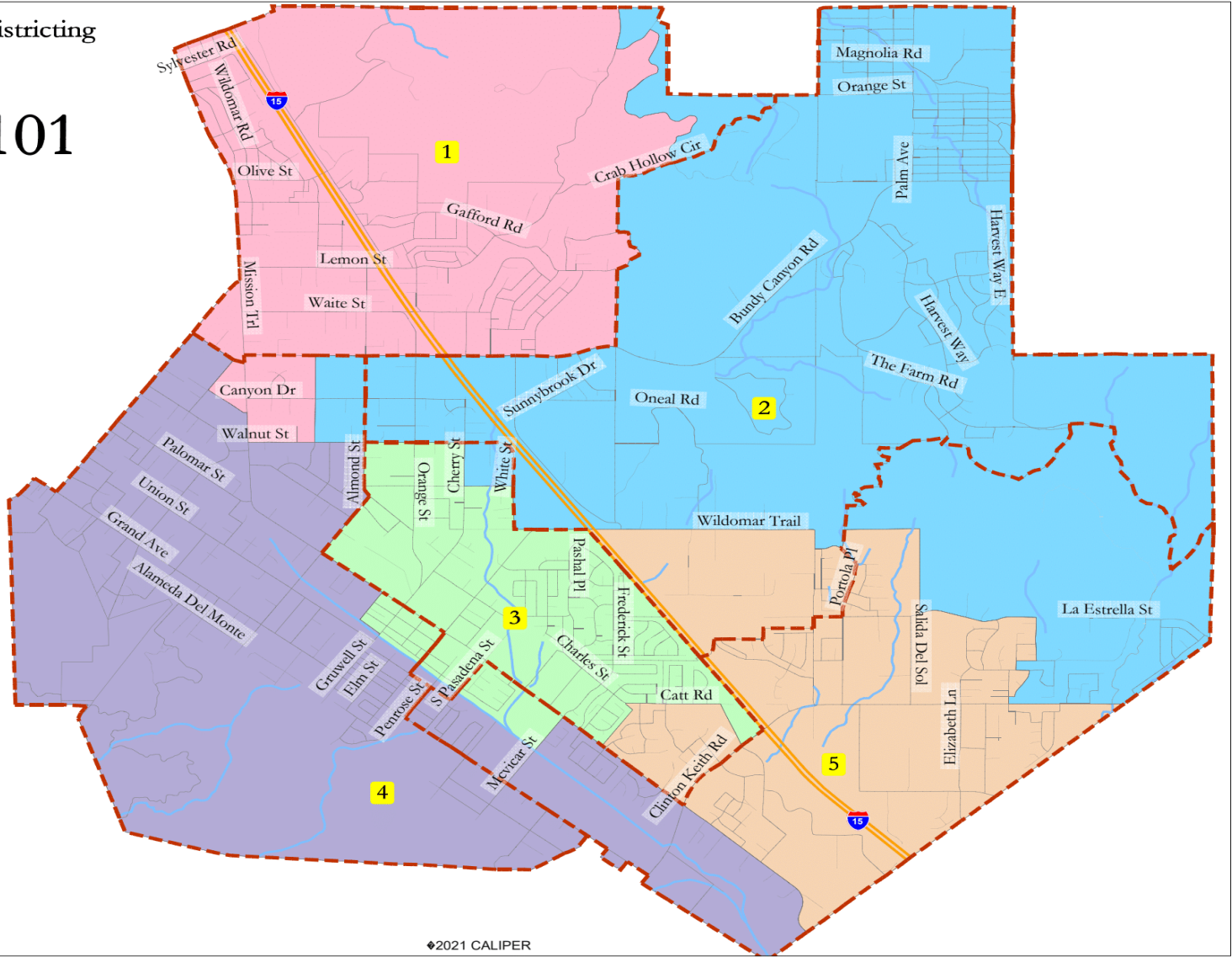
# NDC Map 103 Demographics

| NDC Map 103                   |                      |        |        |       |       |        |        |
|-------------------------------|----------------------|--------|--------|-------|-------|--------|--------|
| District                      |                      | 1      | 2      | 3     | 4     | 5      | Total  |
|                               | Total Pop            | 7,304  | 7,399  | 7,770 | 7,402 | 7,123  | 36,998 |
|                               | Deviation from ideal | -96    | -1     | 370   | 2     | -277   | 647    |
|                               | % Deviation          | -1.30% | -0.01% | 5.00% | 0.03% | -3.74% | 8.74%  |
| Total Pop                     | % Hisp               | 56.3%  | 38%    | 39%   | 41%   | 30%    | 41%    |
|                               | % NH White           | 34%    | 50%    | 43%   | 47%   | 44%    | 44%    |
|                               | % NH Black           | 3%     | 3%     | 5%    | 3%    | 9%     | 4%     |
|                               | % Asian-American     | 3%     | 4%     | 8%    | 5%    | 12%    | 7%     |
| Citizen Voting Age Pop        | Total                | 4,302  | 4,903  | 4,956 | 4,773 | 4,703  | 23,637 |
|                               | % Hisp               | 42%    | 29%    | 35%   | 32%   | 23%    | 32%    |
|                               | % NH White           | 49%    | 63%    | 51%   | 62%   | 50%    | 55%    |
|                               | % NH Black           | 4%     | 2%     | 7%    | 1%    | 11%    | 5%     |
|                               | % Asian/Pac.Isl.     | 4%     | 3%     | 6%    | 3%    | 14%    | 6%     |
| Voter Registration (Nov 2020) | Total                | 3,495  | 4,632  | 4,436 | 4,381 | 4,015  | 20,959 |
|                               | % Latino est.        | 41%    | 26%    | 31%   | 29%   | 25%    | 30%    |
|                               | % Spanish-Surnamed   | 38%    | 24%    | 29%   | 27%   | 23%    | 28%    |
|                               | % Asian-Surnamed     | 1%     | 1%     | 2%    | 2%    | 3%     | 2%     |
|                               | % Filipino-Surnamed  | 1%     | 1%     | 2%    | 1%    | 2%     | 2%     |
|                               | % NH White est.      | 55%    | 70%    | 59%   | 68%   | 60%    | 63%    |
| Voter Turnout (Nov 2020)      | % NH Black           | 3%     | 2%     | 8%    | 1%    | 12%    | 5%     |
|                               | Total                | 2,633  | 3,687  | 3,601 | 3,593 | 3,264  | 16,778 |
|                               | % Latino est.        | 39%    | 24%    | 29%   | 27%   | 24%    | 28%    |
|                               | % Spanish-Surnamed   | 36%    | 22%    | 27%   | 25%   | 22%    | 26%    |
|                               | % Asian-Surnamed     | 1%     | 1%     | 2%    | 2%    | 2%     | 2%     |
|                               | % Filipino-Surnamed  | 1%     | 1%     | 2%    | 1%    | 2%     | 2%     |
| % NH White est.               | 56%                  | 71%    | 61%    | 70%   | 61%   | 64%    |        |
|                               | % NH Black           | 3%     | 2%     | 8%    | 1%    | 12%    | 5%     |

# Public 101

Map layers

- Public 101
- Census Block
- River
- Streets
- Currents



◆2021 CALIPER

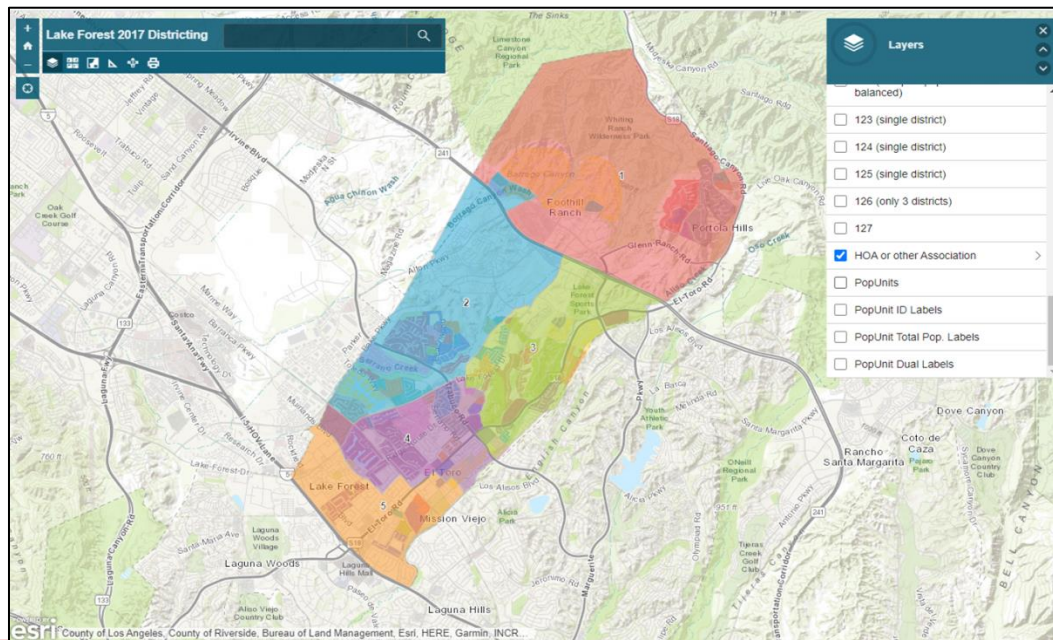
# Public Map 101 Demographics

| Public 101                    |                      |       |       |        |       |        |        |
|-------------------------------|----------------------|-------|-------|--------|-------|--------|--------|
| District                      |                      | 1     | 2     | 3      | 4     | 5      | Total  |
|                               | Total Pop            | 7,408 | 7,436 | 7,375  | 7,408 | 7,371  | 36,998 |
|                               | Deviation from ideal | 8     | 36    | -25    | 8     | -29    | 65     |
|                               | % Deviation          | 0.11% | 0.49% | -0.34% | 0.11% | -0.39% | 0.88%  |
| Total Pop                     | % Hisp               | 56.1% | 37%   | 37%    | 44%   | 30%    | 41%    |
|                               | % NH White           | 34%   | 49%   | 46%    | 43%   | 44%    | 44%    |
|                               | % NH Black           | 3%    | 3%    | 4%     | 3%    | 9%     | 4%     |
|                               | % Asian-American     | 3%    | 6%    | 7%     | 5%    | 12%    | 7%     |
|                               |                      |       |       |        |       |        |        |
| Citizen Voting Age Pop        | Total                | 4,365 | 5,278 | 4,806  | 4,714 | 4,474  | 23,637 |
|                               | % Hisp               | 42%   | 28%   | 33%    | 34%   | 24%    | 32%    |
|                               | % NH White           | 49%   | 62%   | 54%    | 60%   | 49%    | 55%    |
|                               | % NH Black           | 4%    | 3%    | 6%     | 2%    | 11%    | 5%     |
|                               | % Asian/Pac.Isl.     | 4%    | 5%    | 6%     | 3%    | 13%    | 6%     |
| Voter Registration (Nov 2020) | Total                | 3,533 | 4,518 | 4,420  | 4,225 | 4,263  | 20,959 |
|                               | % Latino est.        | 41%   | 26%   | 30%    | 31%   | 25%    | 30%    |
|                               | % Spanish-Surnamed   | 38%   | 24%   | 27%    | 29%   | 23%    | 28%    |
|                               | % Asian-Surnamed     | 1%    | 2%    | 1%     | 2%    | 3%     | 2%     |
|                               | % Filipino-Surnamed  | 1%    | 2%    | 2%     | 1%    | 2%     | 2%     |
|                               | % NH White est.      | 54%   | 69%   | 62%    | 67%   | 60%    | 63%    |
|                               | % NH Black           | 3%    | 2%    | 6%     | 1%    | 12%    | 5%     |
| Voter Turnout (Nov 2020)      | Total                | 2,656 | 3,593 | 3,613  | 3,420 | 3,496  | 16,778 |
|                               | % Latino est.        | 39%   | 23%   | 28%    | 28%   | 24%    | 28%    |
|                               | % Spanish-Surnamed   | 36%   | 22%   | 26%    | 26%   | 22%    | 26%    |
|                               | % Asian-Surnamed     | 1%    | 2%    | 1%     | 2%    | 2%     | 2%     |
|                               | % Filipino-Surnamed  | 1%    | 2%    | 2%     | 1%    | 2%     | 2%     |
|                               | % NH White est.      | 56%   | 71%   | 63%    | 69%   | 61%    | 64%    |
|                               | % NH Black           | 3%    | 2%    | 7%     | 1%    | 11%    | 5%     |

# Simple Map Review Tool

## Online Interactive Review Map

- ESRI's “ArcGIS Online” – similar to Google Maps in ease of use
- Used to review, analyze and compare maps, not to create them
- Includes overlays of “community of interest” and other data



# Discussion

- Conduct a Public Hearing
- Set next Public Hearing Date
- Provide direction on what map the Council prefers or new map the Council would like see at the next hearing

# Redistricting Process Details

| Date(s)           | Description   | Comments   |
|-------------------|---|--|
| September 8, 2021 | 1 <sup>st</sup> Public Hearing  |  |
| November 10, 2021 | 2nd Public Hearing  |  |
| Mid-October 2021  | Mapping software released to the public.  |  |
|                   | *Estimated time depending on Census data  |  |
| December 1, 2022  | Maps due from the public.   |  |
| January 12, 2022  | 3rd Public Hearing  |  |
| ?????             | Publish Draft map(s)  | 7 Days prior to adoption                           |
| ?????             | 4th Public Hearing and Council adopt District map. Must be completed no later than April 17, 2022 | The 4th hearing could also be the adoption hearing |
| April 17, 2022    | Deadline to adopt and submit map to Registrar   |  |

# Share Your Thoughts

---

## Website

[www.cityofwildomar.org](http://www.cityofwildomar.org)

## Phone

951-677-7751 x210

## Email

[jmorales@cityofwildomar.org](mailto:jmorales@cityofwildomar.org)